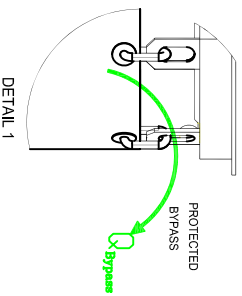
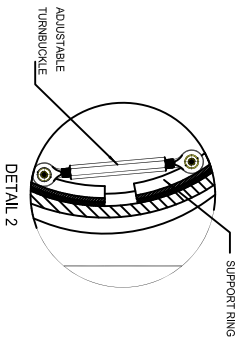
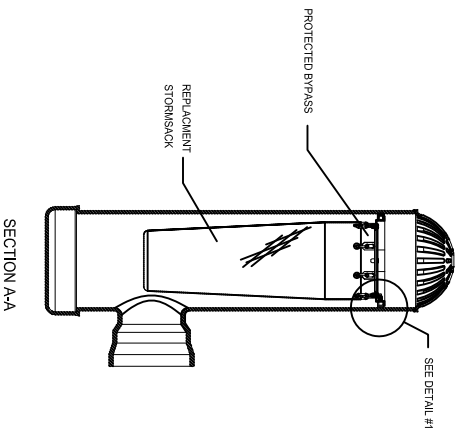
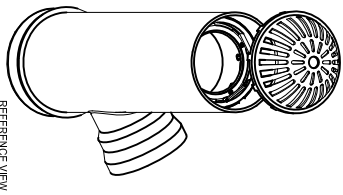
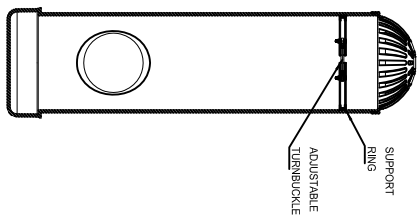
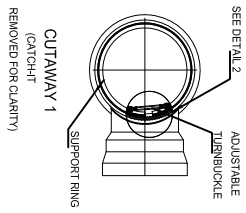
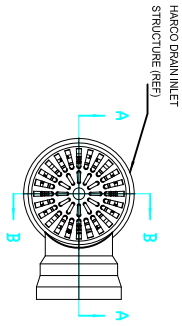
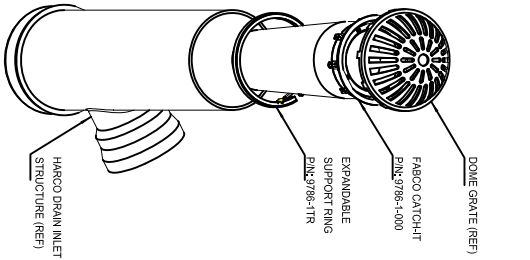


- NOTES:
1. STORMSACK WEIGHT (EMPTY): 12 LB MAX
 2. MATERIAL:
 - A) SHROUD: HIGH DENSITY POLYETHYLENE (TYPICAL WALL THICKNESS: .125")
 - B) SUPPORT HUB: CRS; POWDER COATED
 - C) STORMSACK: WOVEN POLYPROPYLENE GEOTEXTILE (GEOTEX 117F)
 - D) HARDWARE: ALUMINUM POP-RIVETS
 3. RECOMMENDED MINIMUM VAULT DEPTH: 2-IN BELOW CARTRIDGE
 4. TYPICAL INSTALLATION: RAISE STORM GRATE, PUSH CATCHIT SHROUD DOWN ON FRAME SUPPORT LEDGE UNTIL LOCKING-CLIPS CLICK IN PLACE, LOWER STORM GRATE.
 5. USE ONLY WITH FABCO REPLACEABLE STORMSACK.

STRUCTURE DIAMETER (INCHES)	DEBRIS CAPACITY (CF)	FILTERED FLOWRATE (CFS)	BYPASS FLOWRATE (CFS)	TOTAL SYSTEM FLOWRATE (CFS)
12	0.77	2.2	1.2	3.4
18	1.85	2.5	1.0	3.5
24	3.60	4.9	2.4	7.3
30	6.20	4.9	2.4	7.3



FABCO BEEHIVE OVERFLOW FILTER STRUCTURE DETAILS

FOR MORE INFORMATION CONTACT ACF ENVIRONMENTAL
 WWW.ACFENVIRONMENTAL.COM
 800.448.3636

